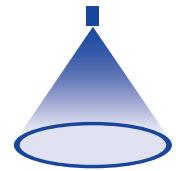


➤ Eccentric hollow cone nozzles Series 373 Ramp Bottom

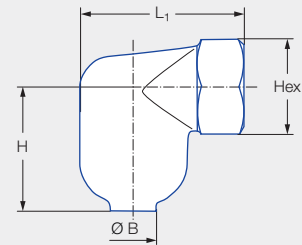
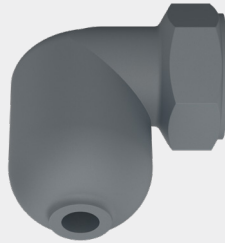


Features:

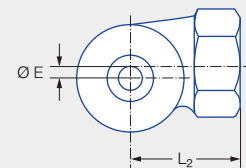
- Fine, uniform atomization even at low pressure
- Patented swirl chamber with built-in ramp extends service life

Applications:

- Gas cooling
- Water recooling
- Dust control



Series 373



Code	G	Dimensions [mm]					Weight [g]
		H	L ₁	L ₂	E	Hex	
AN	1 BSPP	52.0	67.0	45.0	6.3	41	285.0
AQ	1 1/4 BSPP	65.0	77.0	51.0	7.9	48	570.0
AS	1 1/2 BSPP	81.0	97.0	65.0	7.9	58	900.0

Spray angle	Ordering no.				Bore diameter B [mm]	V̇ water [l/min]						Spray diameter D [mm] (at p = 2 bar)		
	Type	Mat. no.	Code			p [bar]						H = 500 [mm]	H = 1,000 [mm]	
		17					0.3	0.5	1.0	2.0	5.0			10.0
80°		Stainless steel 316	1 BSPP	1 1/4 BSPP	1 1/2 BSPP									
	373.115	●	AN			11.40	24.40	31.50	44.55	63.00	99.61	140.87	670	1,200
	373.175	●	AN			12.90	30.98	40.00	56.57	80.00	126.49	178.89	800	1,450
	373.235	●		AQ		16.20	45.70	59.00	83.44	118.00	186.57	263.86	750	1,300
	373.285	●		AQ		20.50	61.97	80.00	113.14	160.00	252.98	357.77	800	1,350
	373.325	●			AS	22.20	77.46	100.00	141.42	200.00	316.23	447.21	900	1,500
373.365	●			AS	23.60	87.92	113.50	160.51	227.00	358.92	507.59	830	1,400	

Conversion formula for this series: $\dot{V}_2 = \dot{V}_1 \cdot \sqrt{\frac{p_2}{p_1}}$

Ordering Type + Material no. + Code = Ordering no.
example: 373.115 + 17 + AN = 373.115.17.AN

Assembly accessories can be found in Chapter 9 "Accessories".