

## Flow Indicator SK-...GR



- High temperature resistance
- Double-sided large-surface window
- Natural glass
- Display of flow rate

### Characteristics

Mechanical flow indicator for fluid media. A stainless steel flap in the area of flow is lifted by the volume flow, and indicates the present flow rate.

### Technical data

<b>Nominal width</b>	DN 15..50	
<b>Process connection</b>	female thread G 1/2..G 2	
<b>Display range</b>	3..195 l/min	for details see table "Ranges"
<b>Q<sub>max.</sub></b>	to 250 l/min	
<b>Pressure resistance</b>	PN 16 bar	
<b>Media temperature</b>	0..+100 °C water -20..+170 °C oil	
<b>Ambient temperature</b>	-20..+100 °C	
<b>Materials medium-contact</b>	cast tin bronze, grey iron, crown hardened glass, Flexicarb with nickel reinforcement, 1.4436	
<b>Materials, non-medium-contact</b>	aluminium	
<b>Medium</b>	water (oils available on request)	
<b>Weight</b>	see table "Dimensions and weights"	
<b>Installation location</b>	Standard: Horizontal inwards flow from the left; optionally flow from bottom, installation position affects the range.	

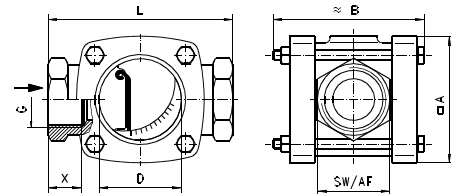
### Ranges

Details in the table correspond to horizontal inwards flow with decreasing flow rate.

G	Display range l/min H <sub>2</sub> O	Q <sub>max.</sub> recommended	Types
G 1/2	3 - 25	30	SK-015GR025
G 3/4		40	SK-020GR025
G 1	5 - 40	60	SK-025GR040
G 1 1/2	10 - 76	120	SK-040GR076
G 2	15 - 195	250	SK-050GR195

### Dimensions and weights

G	Types	L	A	B	D	SW	X	Weight kg
G 1/2	SK-015GR.	90	60	74	40	36	14	1.0
G 3/4	SK-020GR.							
G 1	SK-025GR.	110	76	95	49	43	18	1.8
G 1 1/2	SK-040GR.	130	90	116	60	61	20	3.4
G 2	SK-050GR.	170	114	138	80	74	25	5.9



### Scaling

Scale divisions 1 to 10.

Display range l/min H <sub>2</sub> O	Scale divisions									
	1	2	3	4	5	6	7	8	9	10
3 - 25	3	4	5	7	8	9	10	14	20	25
5 - 40	5	7	9	10	13	15	18	21	28	40
10 - 76	10	14	19	22	27	30	36	44	63	76
15 - 195	15	23	29	35	41	46	59	79	118	195

### Ordering code

SK -  1.  2.  3.  4.  
SK -  G  R

1. Nominal width									
015	DN 15 - G 1/2								
020	DN 20 - G 3/4								
025	DN 25 - G 1								
040	DN 40 - G 1 1/2								
050	DN 50 - G 2								
2. Process connection									
G	female thread								
3. Connection material									
R	cast tin bronze								
4. Display range									
025	3 - 25 l/min								● ●
040	5 - 40 l/min								● ●
076	10 - 76 l/min								● ●
195	15 - 195 l/min								● ●